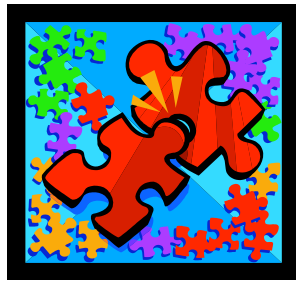


Autism

“what it is and what it is not”



(The puzzle piece represents the complexity of Autism Spectrum Disorder)

This parenting workshop, will provide you with basic information on Autism Spectrum Disorder. The characteristics and diagnosis will be discussed, as well as how the disorder may affect the child in the school setting.

Monday, March 29, 2010 – 6:00-8:30

Castle Heights Upper Elementary

Facilitated by Lynn Cable, Director of Special Education
and Debbie Hatfield, LSSD Autism Consultant
Lebanon Special School District

Kids Get Free Puzzles!

RSVP to Beth Petty at 615-453-2693, 615-804-2460 or pettyb@k12tn.net

Free Workshop, Childcare and Great Refreshments!